



Maryland Health Care Spending 2011

Presented by Social & Scientific Systems

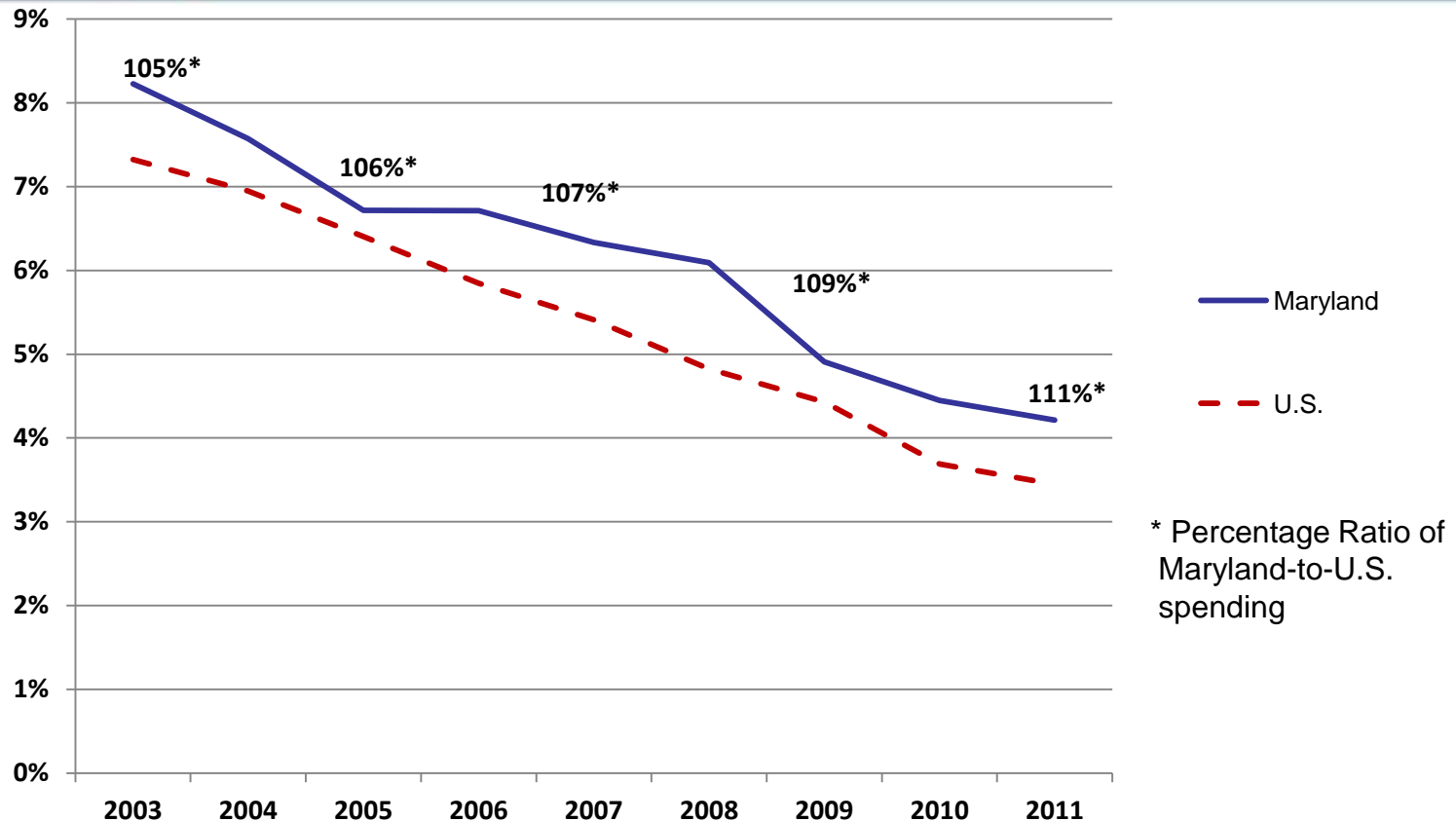
April 18, 2013

PERSONAL HEALTH CARE SPENDING, 2011

Maryland per capita personal healthcare expenditures (PHE) = \$8,199

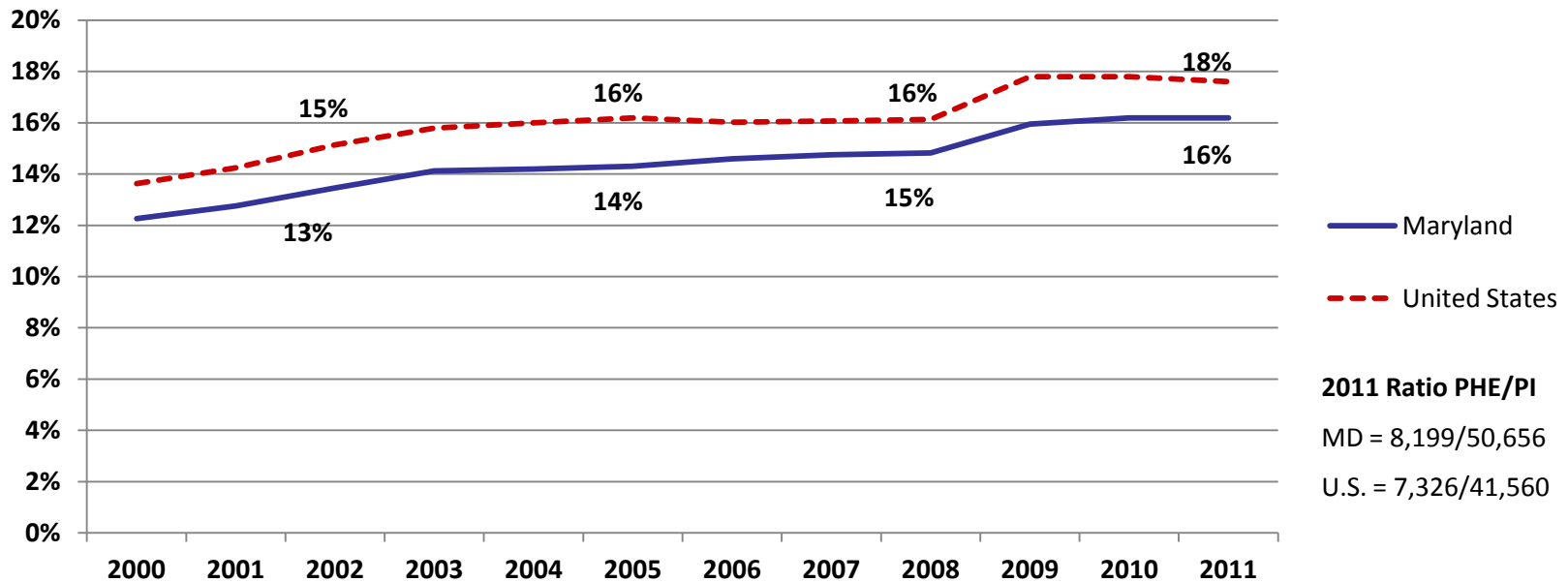
- 4.2% increase in Maryland per capita PHE from 2010
- 16.2% of Maryland 2011 per capita personal income (\$50,656)
- Compared to U.S. 2011:
 - 112% of national average per capita PHE
 - faster growth rate (U.S. = 3.3%)
 - lower share of per capita personal income (U.S. = 17.6%)

GROWTH IN PER CAPITA PHE, MARYLAND AND U.S.: 2000 TO 2011

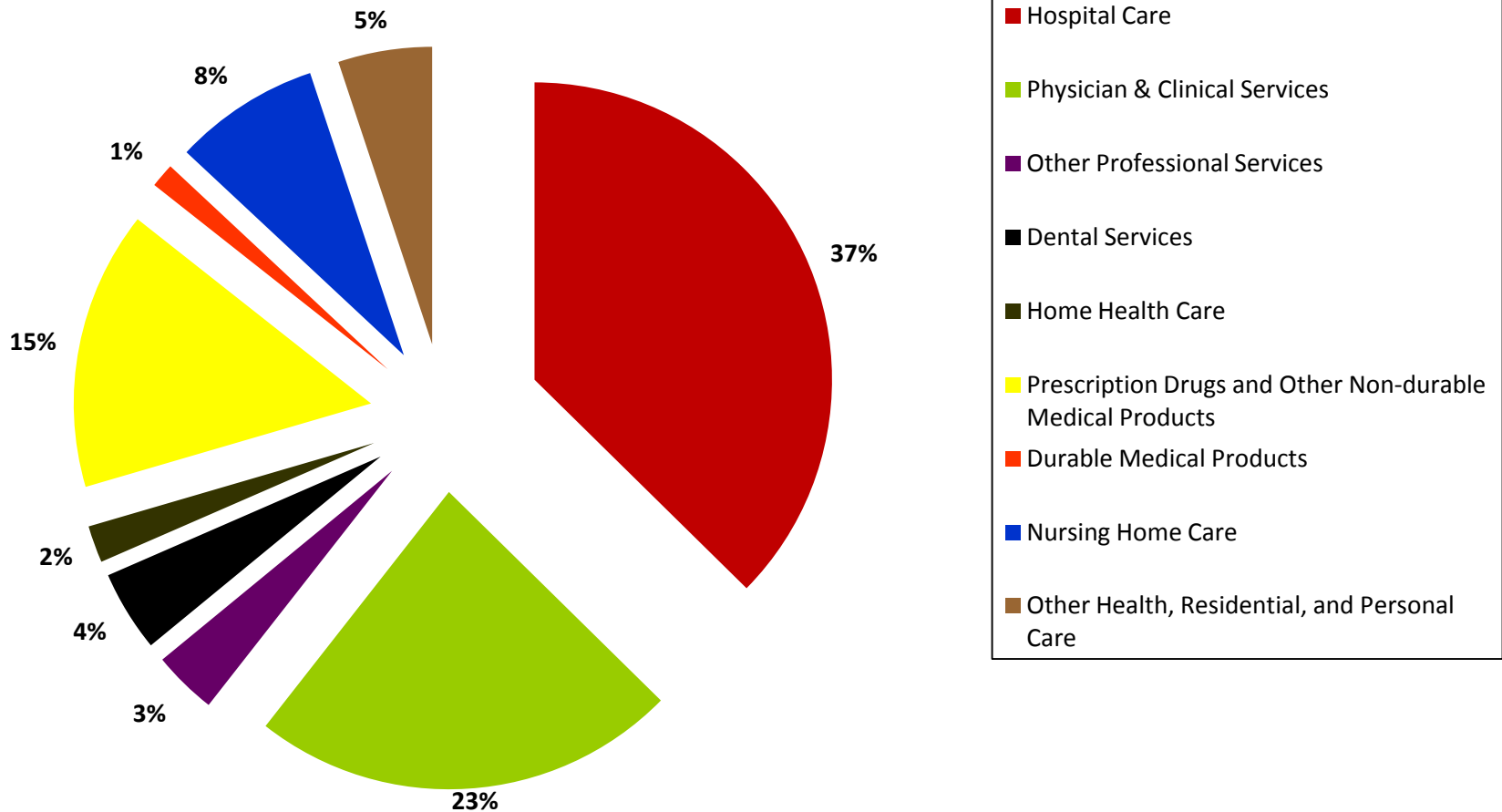


Note : Growth rates are calculated as a 3-year moving average of the annual percentage change in spending. Moving averages are used to reduce the effect of short-term fluctuations so as to more easily observe underlying data trends. Percentage ratios are the average of ratios in the 3 corresponding years.

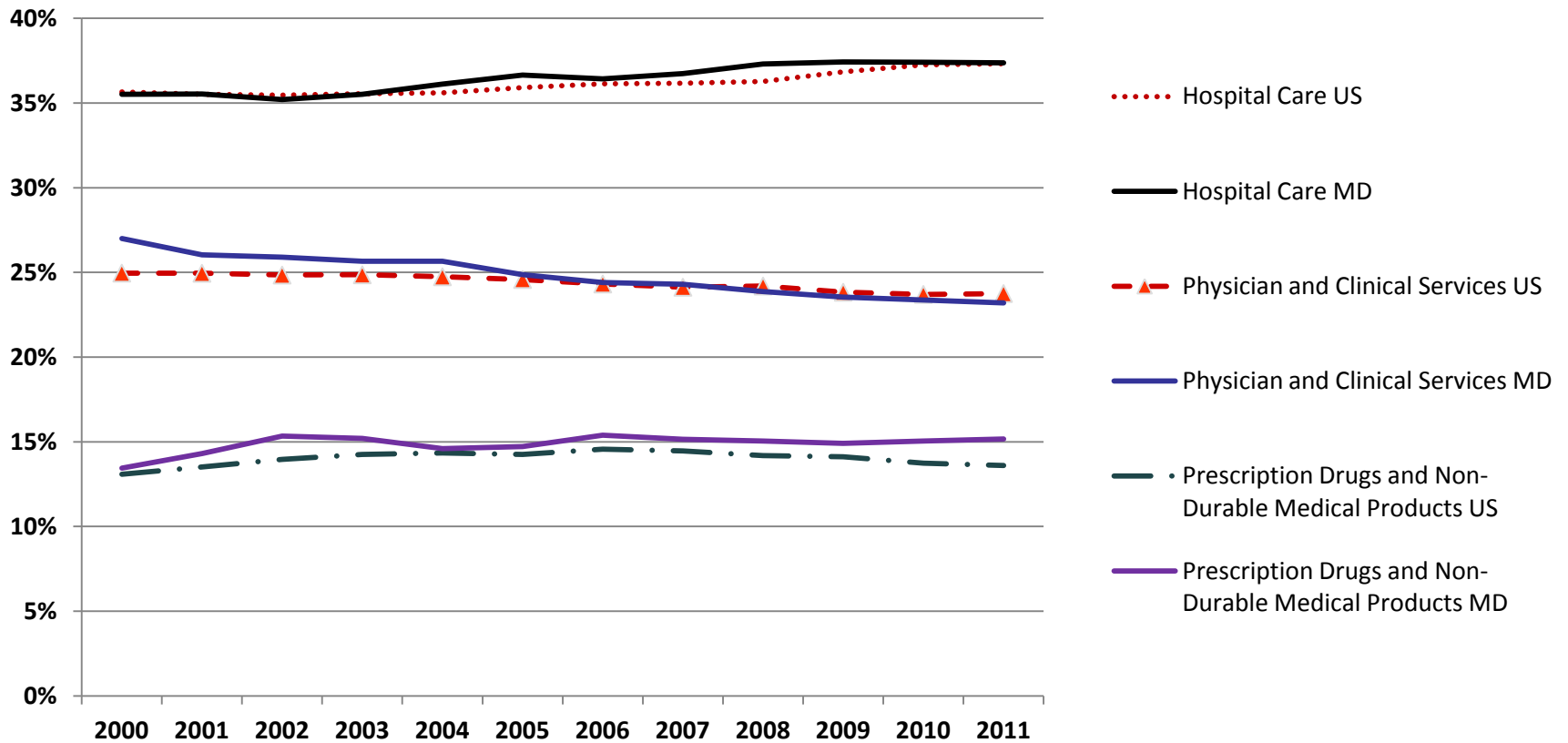
RATIO OF PER CAPITA PHE AND PERSONAL INCOME, MARYLAND AND U.S.: 2000-2011



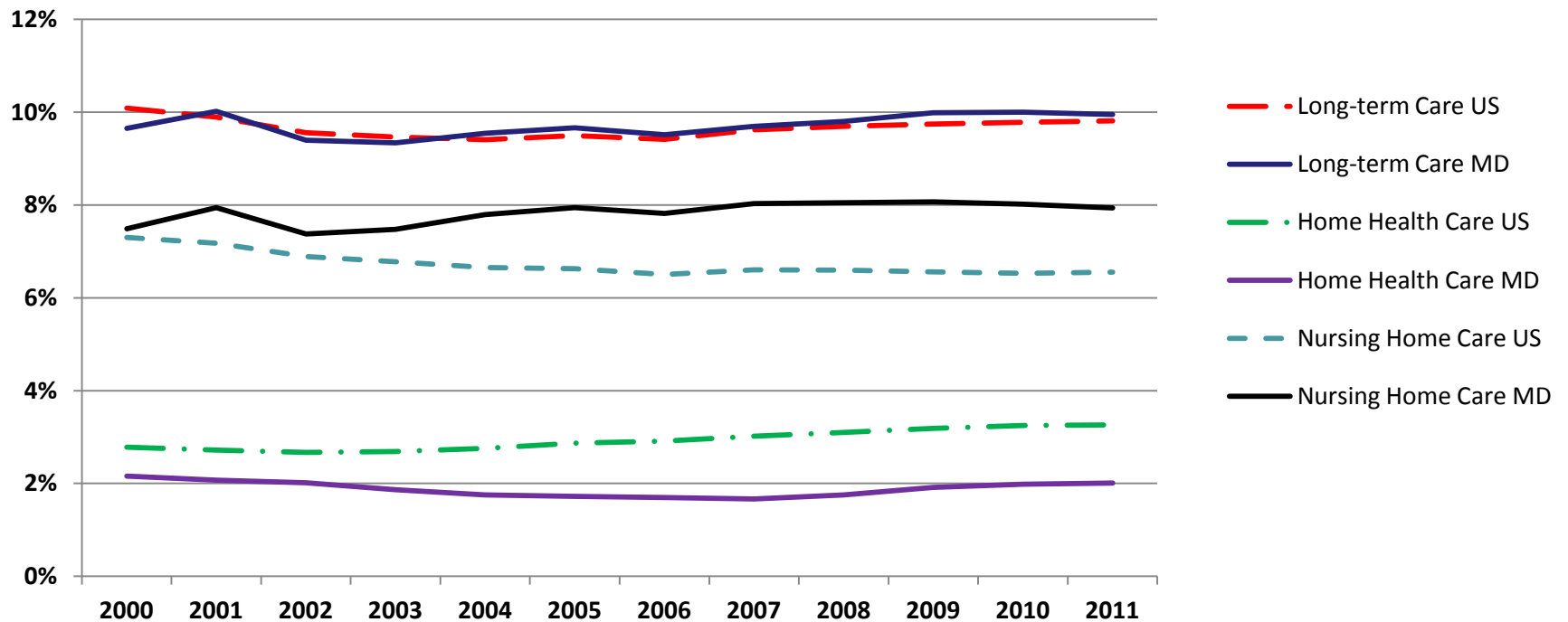
SHARE OF TOTAL PHE BY TYPE OF SERVICE, Maryland: 2011



TREND IN SHARE OF PHE FOR SELECTED TYPES OF SERVICE: U.S. AND MD 2000-2011

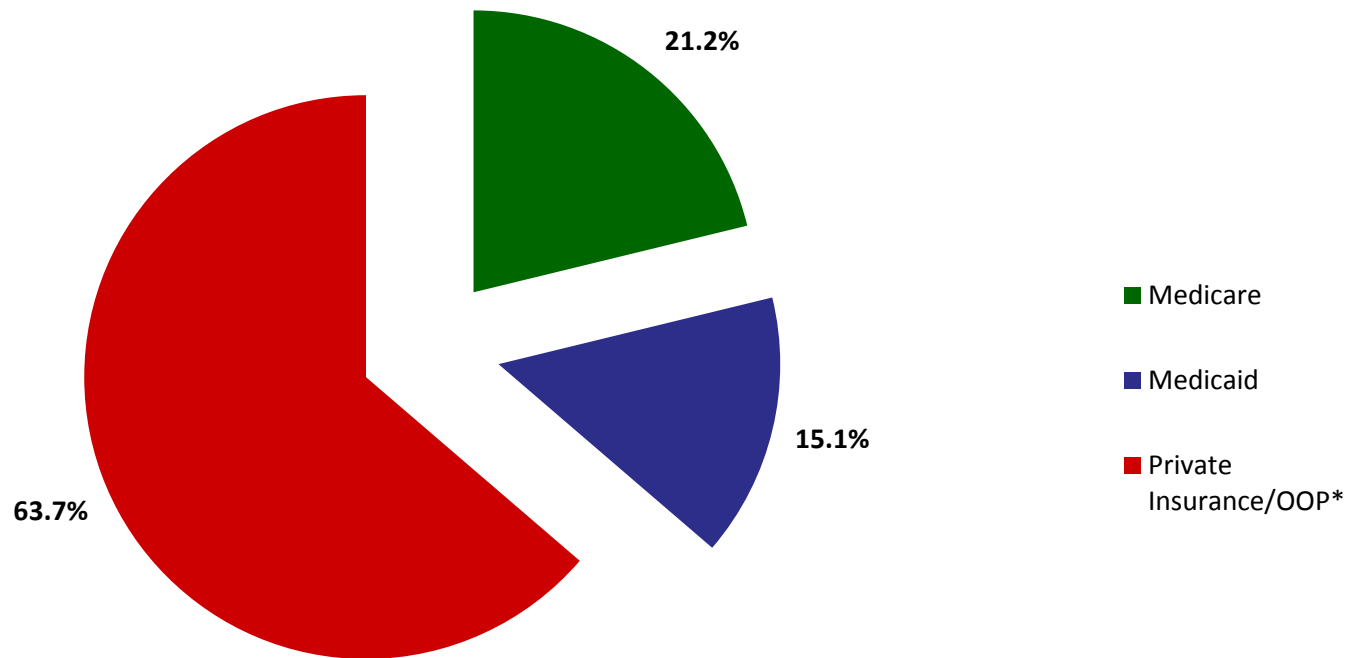


TREND IN SHARE OF PHE FOR LONG-TERM CARE BY TYPE OF SERVICE, MARYLAND AND U.S.: 2000-2011



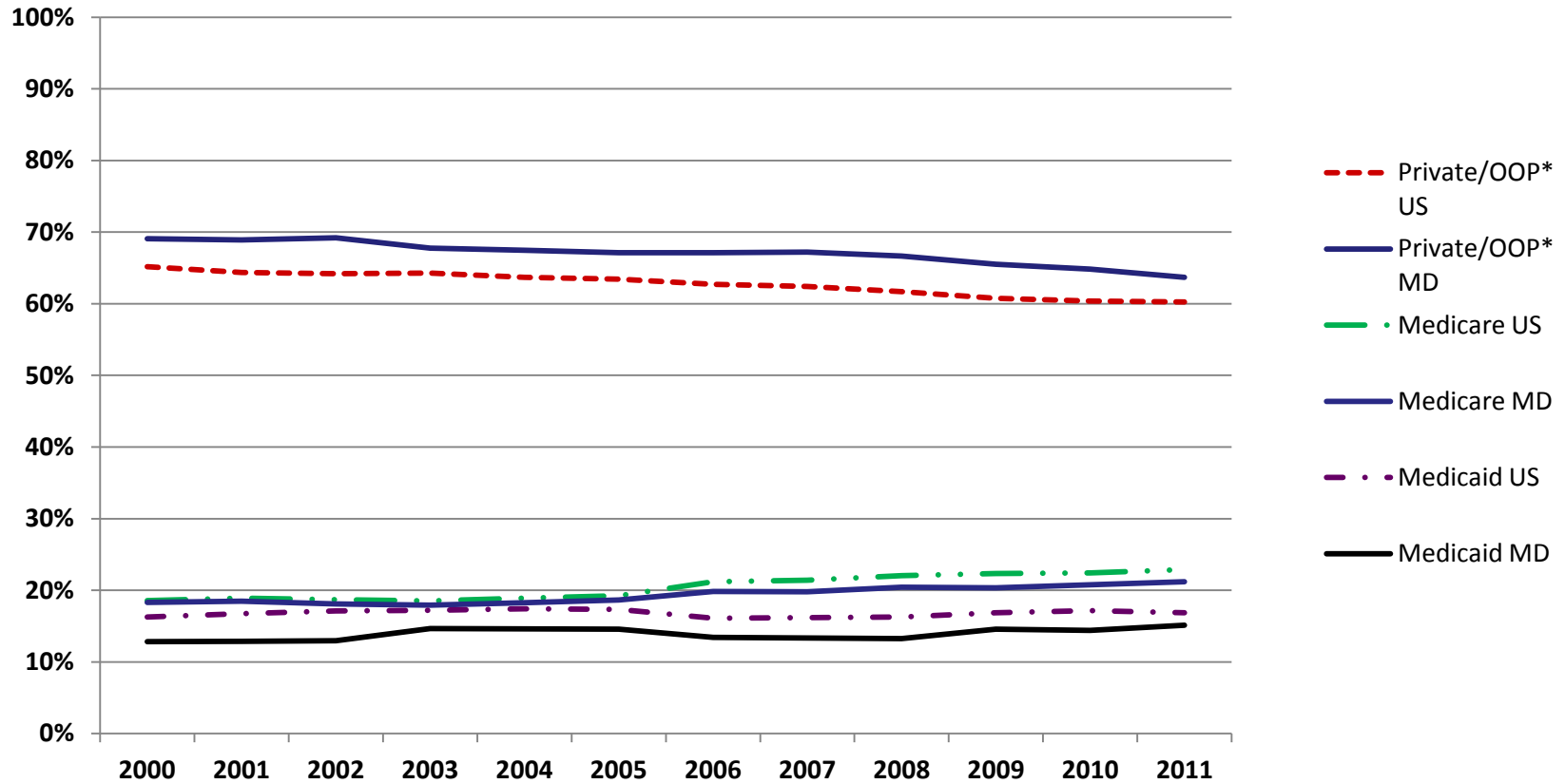
Note: Percentages are the shares of Personal Healthcare Expenditures in each year.

SHARE OF TOTAL PHE BY PAYER FOR MD, 2011



*Also includes small shares of VA, DoD, and other third party payers and programs

TRENDS IN SHARE OF PHE BY PAYER, MARYLAND AND U.S., 2000-2011



*Also includes small shares of VA, DoD, and other third party payers and programs

APPENDIX

METHODS

Data Sources

- Maryland expenditure estimates come from the Centers for Medicare & Medicaid Services' Health Expenditures by State of Residence (2009)
- National health expenditure estimates are from CMS' National Health Expenditures Accounts

Prediction Model

- Time series models used
- CMS spending data for Maryland and the United States for 1991-2009 used to predict MD and U.S. spending in 2011 by type of service and payer source
- Spending for 2011 in Maryland estimated for each service category by applying ratios of predicted 2011 Maryland-to-national spending estimates (for each service category) to CMS-published national spending data for 2011

METHODS

All expenditures measure personal health care spending annually by type of service

Expressed in nominal terms

Personal health care spending excludes

- Administration
- Net Cost of private health insurance
- Government spending on public health

Estimates of expenditures in Maryland are for Maryland residents

Hospital care includes hospital-based

- Nursing care facilities
- Home health care

Nursing care facilities include

- Continuing care retirement communities

Other Health, Residential, and Personal Care includes

- Expenditures for residential care facilities
- Medicaid home and community-based waiver programs
- Ambulance providers
- Medical care delivered in non-traditional settings (e.g. community centers and schools)